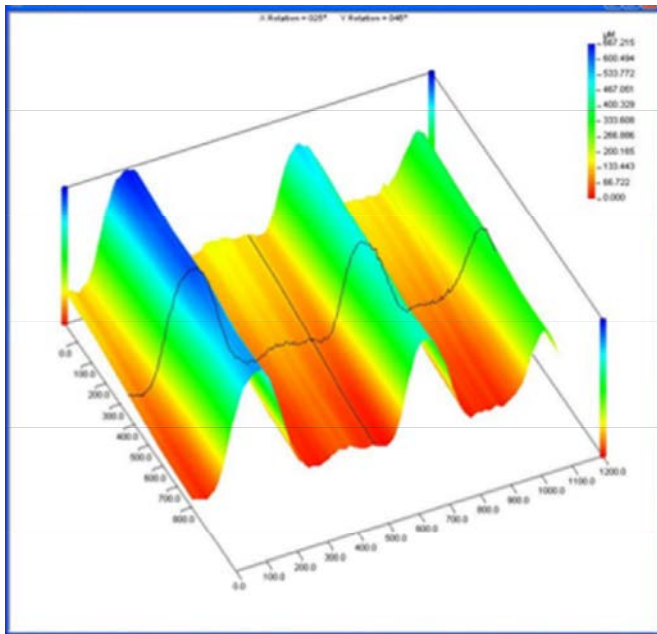


ACTIVE LEVELLING SYSTEM FROM **BRONX ENGINEERING**

Bronx Active Levelling system will provide shape monitoring and automatic correction without input from the leveller operator.

Strip shape is measured by a series of distance measuring lasers which are used to calculate and display strip shape as a 3D image and i-unit dimension



Active Levelling combined with Bronx recommended initial leveller settings will provide a complete auto-levelling system. Operator input is required for initial confirmation prior to switching to auto-levelling. This system is available for use on any new and existing Precision Levellers.



Adjustments are made automatically to tilt, plunge and back-up rolls to correct strip shape error to the required tolerance.



For more information on our range of Bronx Spares, please contact our Sales team or Sales Office

Bronx Engineering Limited. 48 Enterprise Trading Estate, Pedmore Road, Brierley Hill, West Midlands, DY5 1TX, England

Tel: +44 (0)1384 486648

Fax: +44 (0) 1384 486440

Email: coil@bronx.co.uk

Website: www.bronx.co.uk

